

**KEY**

- T1** Tree to be retained
- T2** Tree to be removed
- T3** Tree to be retained
- T4** Tree to be removed
- T5** Tree to be retained
- T6** Tree to be removed
- T7** Tree to be retained
- T8** Tree to be removed
- T9** Tree to be retained
- T10** Tree to be removed
- T11** Tree to be retained
- CEZ** Construction Exclusion Zone
- G1** Ground Protection
- H1** Heavy Duty Ground Protection

### STEP 1

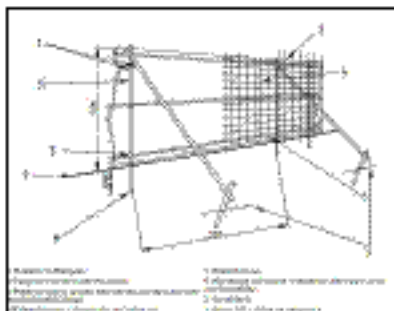
Underline tree works as per Appendix 3 prior to commencement including retention during work to fast track development as follows:

**T2 Ash** - Reduce southern part of canopy by no more than 1.5m. All cuts to be made back to suitable secondary growth and resulting cuts not to exceed 75mm.

**T8 Elm** - Reduce western part of canopy by no more than 4.7m. All cuts to be made back to suitable secondary growth and resulting cuts not to exceed 75mm.

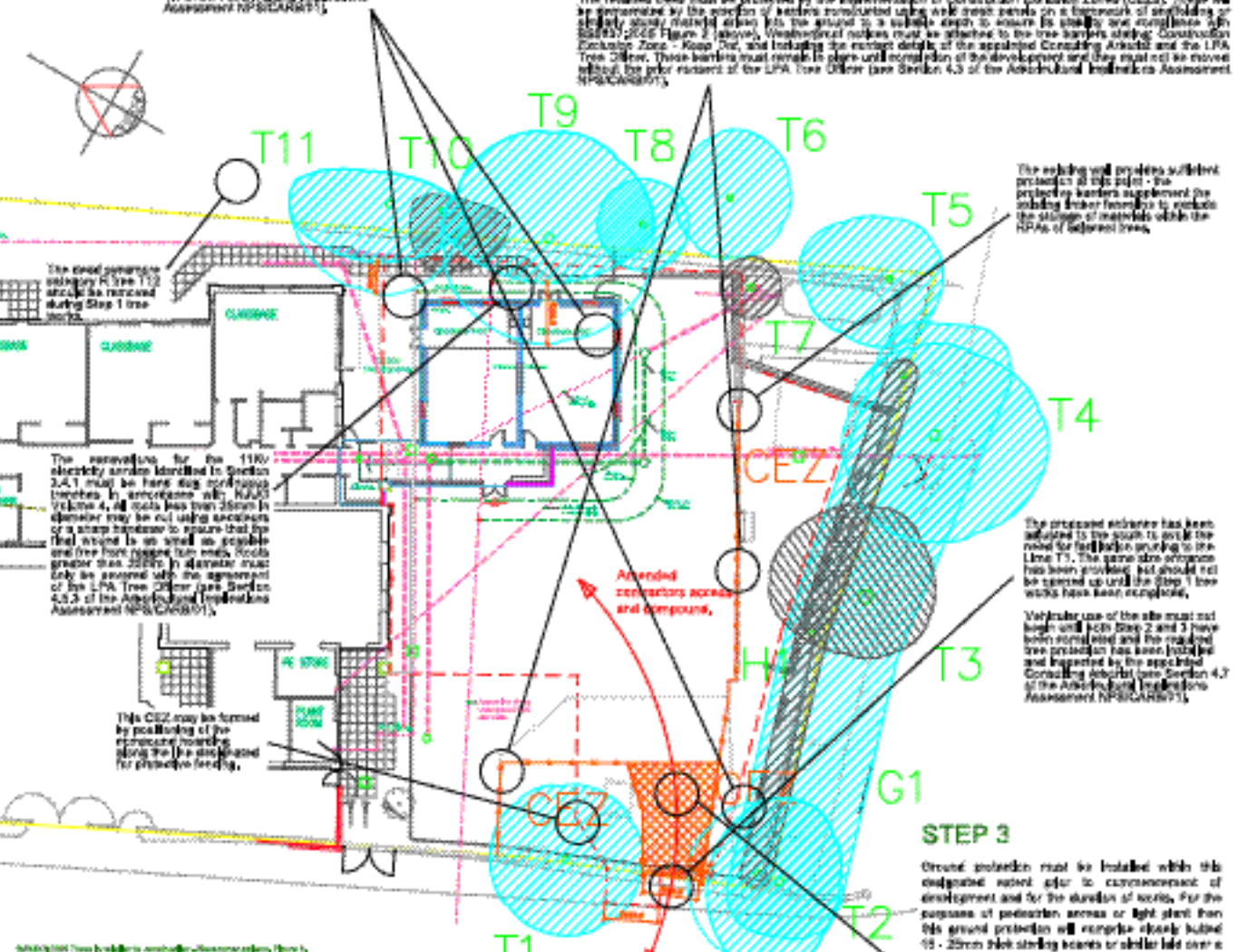
**T11 Birch** - Reduce western part of canopy by no more than 2.5m. All cuts to be made back to suitable secondary growth and resulting cuts not to exceed 75mm.

All works must be undertaken by a competent Arborist working to BS3998:2013 (see Section 4.1 of the Arboricultural Implications Assessment NPS/CAR/01).



### STEP 2

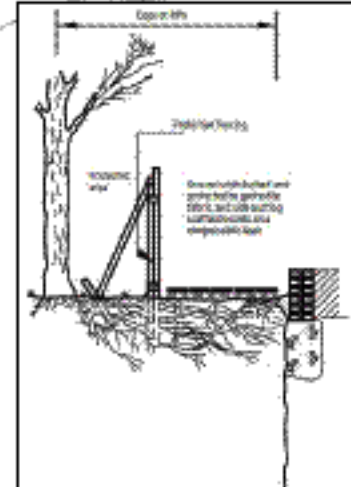
The retained trees must be protected by the implementation of Construction Exclusion Zones (CEZs). These will be generated by the position of kerbs translocated using work done prior to the start of any ground works. The CEZs will be generated by the position of kerbs translocated using work done prior to the start of any ground works. The CEZs will be generated by the position of kerbs translocated using work done prior to the start of any ground works.



### STEP 3

Ground protection must be installed with this designed to protect the area for the duration of works. For the purpose of protection areas or light plant then this ground protection will comprise closely spaced 100 - 200mm thick steel plates or similar laid over a 75 - 100mm depth of compacted aggregate or sharp sand on a permeable membrane as per BS2037:2005 Figure 3 (optional).

If heavy plant or other large machinery is expected to work within this area then a proprietary modular heavy duty ground protection system such as Dyn-Tekway Box (Tropen) / A-Box or similar must be installed. These will be installed in accordance with the manufacturer's guidelines and be supported by the Consulting Arborist prior to use. Other systems will require approval from the LPA Tree Officer to ensure that it is fit for purpose prior to any installation (see Section 4.4 of the Arboricultural Implications Assessment NPS/CAR/01).



**RAVENCROFT ARBORICULTURAL SERVICES**

3 Knapton Road, Foston  
Gwent, South Wales

Tel: 01493 840011  
Email: info@ravencroft.co.uk

01493 840011  
01493 840011